

Handley Place

Handley Place, Locking, BS24 7LX



BLOCK 3

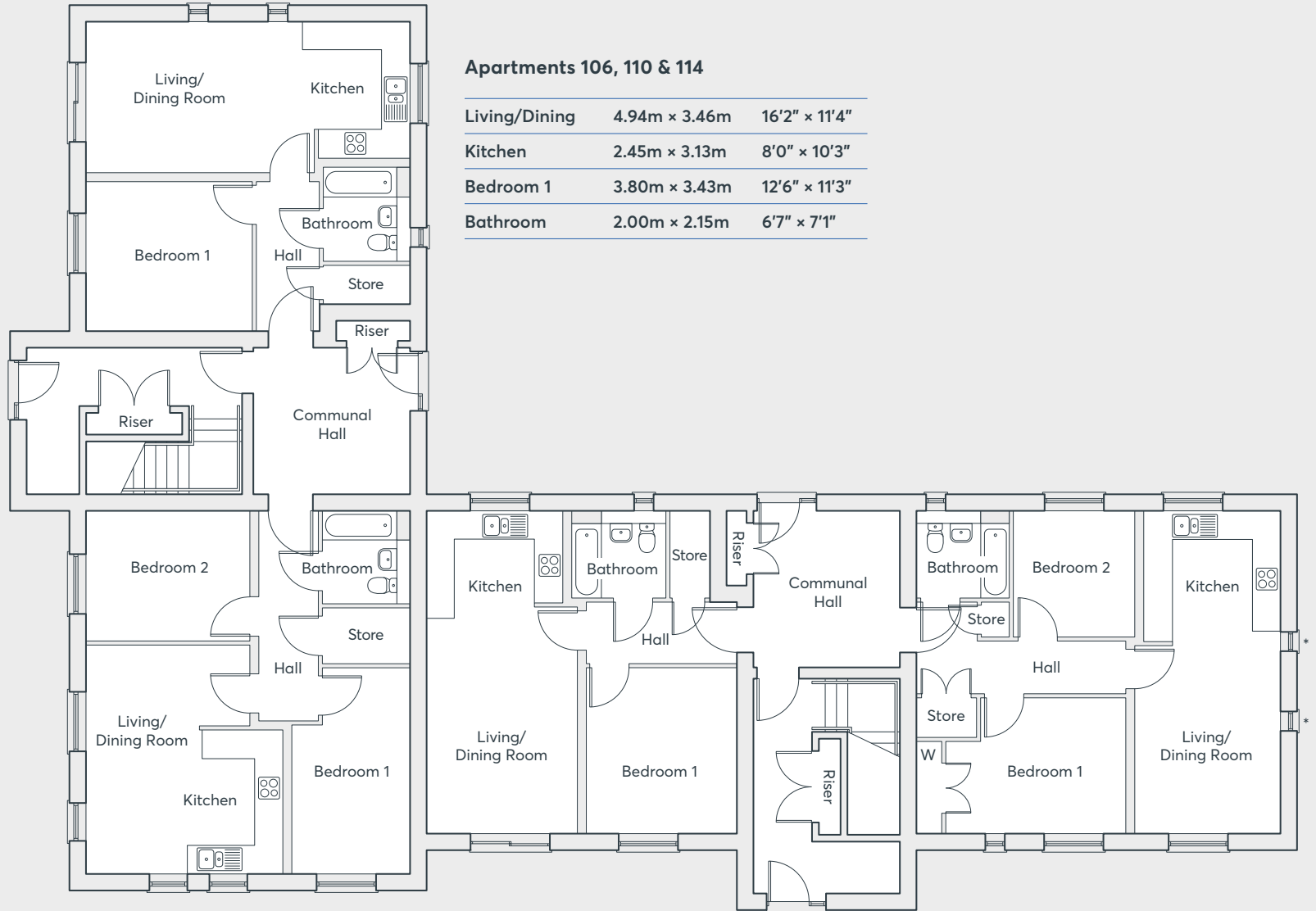


1 & 2 bedroom apartments



Floors 1, 2 and 3

Apartments 106 to 117



Apartments 106, 110 & 114

Living/Dining	4.94m x 3.46m	16'2" x 11'4"
Kitchen	2.45m x 3.13m	8'0" x 10'3"
Bedroom 1	3.80m x 3.43m	12'6" x 11'3"
Bathroom	2.00m x 2.15m	6'7" x 7'1"

Apartments 107, 111 & 115

Living/Dining/Kitchen	4.50m x 5.23m	14'9" x 17'2"
Bedroom 1	2.70m x 4.70m	8'10" x 15'5"
Bedroom 2	3.75m x 3.00m	12'4" x 9'10"
Bathroom	2.00m x 2.15m	6'7" x 7'1"

Apartments 108, 112 & 116

Living/Dining	3.46m x 4.94m	11'4" x 16'2"
Kitchen	3.13m x 2.45m	10'3" x 8'0"
Bedroom 1	3.45m x 3.80m	11'4" x 12'7"
Bathroom	2.15m x 2.00m	7'1" x 6'7"

Apartments 109, 113 & 117

Living/Dining	3.35m x 4.64m	11'0" x 15'2"
Kitchen	3.13m x 2.99m	10'3" x 9'10"
Bedroom 1	4.09m x 3.12m	13'6" x 10'3"
Bedroom 2	2.76m x 2.99m	9'0" x 9'10"
Bathroom	2.15m x 2.00m	7'1" x 6'7"

Computer generated images are indicative only. External finishes, materials, layouts, window positions and styles may vary. Room sizes are taken to the widest point in each room wall to wall and a tolerance of +/- 5% is allowed. The floor plans are for guidance only and may be subject to change and properties may be "handed" or mirror images of the plans shown. Please check with our Sales Consultant or Selling Agent.

* Windows on plots 113 & 117 only



**CONSUMER
CODE FOR
HOME BUILDERS**
www.consumercode.co.uk



St. Modwen Homes, Two Devon Way, Longbridge, Birmingham, B31 2TS
T: 0121 647 1000 E: sales@stmodwenhomes.co.uk

stmodwenhomes.co.uk