

Littlecombe

Off Long Street, Dursley,
Gloucestershire GL11 4HR



MILL HOUSE

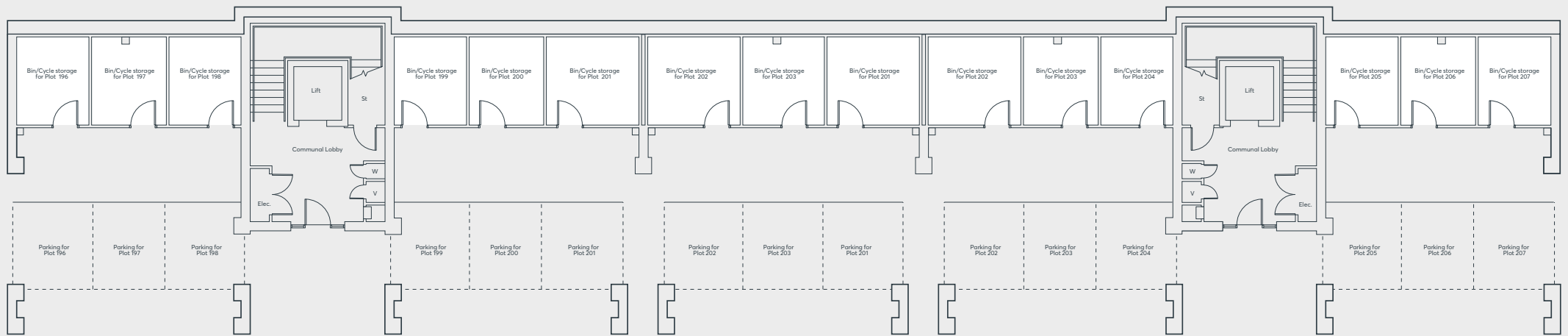
2 bedroom apartments



**ST. MODWEN
HOMES**

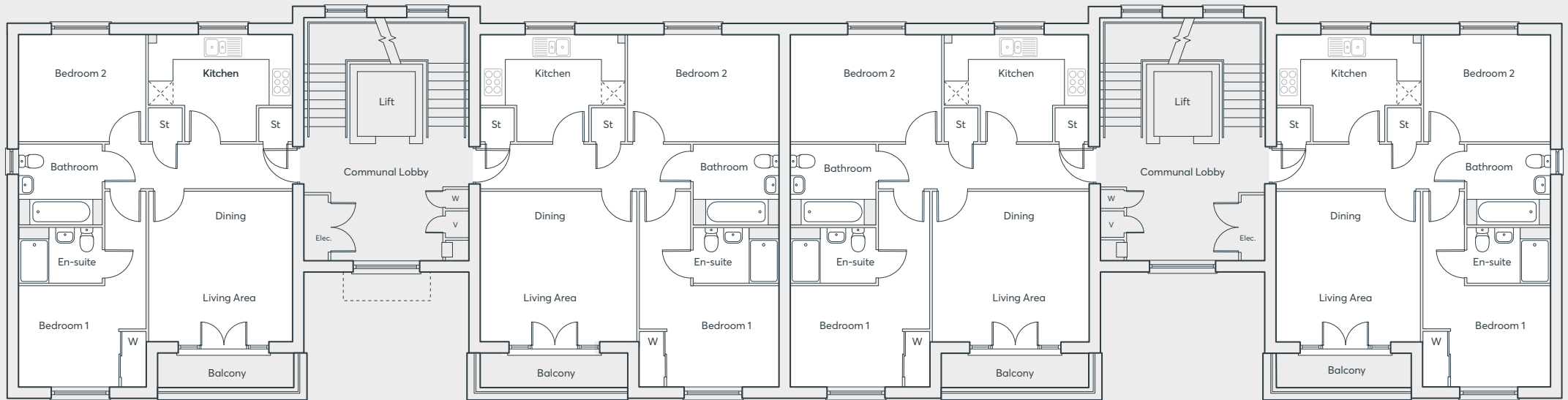


Ground Floor



First, Second and Third Floors

Apartments 196 to 207



Apartments 196, 197 & 198

Living/Dining	3.95 x 4.10	12'11" x 13'6"
Kitchen	3.95 x 2.90	12'11" x 9'6"
Bedroom 1	3.45 x 2.74	11'4" x 9'0"
En-suite	2.25 x 1.50	7'5" x 4'11"
Bedroom 2	3.45 x 2.90	11'4" x 9'6"
Bathroom	2.25 x 2.20	7'5" x 7'3"

Apartments 199, 200 & 201

Living/Dining	4.29 x 4.10	14'1" x 13'6"
Kitchen	3.95 x 2.90	12'11" x 9'6"
Bedroom 1	3.80 x 2.77	12'6" x 9'1"
En-suite	2.33 x 1.50	7'8" x 4'11"
Bedroom 2	4.14 x 2.90	13'7" x 9'6"
Bathroom	2.33 x 2.20	7'8" x 7'3"

Apartments 202, 203 & 204

Living/Dining	4.29 x 4.10	14'1" x 13'6"
Kitchen	3.95 x 2.90	12'11" x 9'6"
Bedroom 1	3.80 x 2.77	12'6" x 9'1"
En-suite	2.33 x 1.50	7'8" x 4'11"
Bedroom 2	4.14 x 2.90	13'7" x 9'6"
Bathroom	2.33 x 2.20	7'8" x 7'3"

Apartments 205, 206 & 207

Living/Dining	3.95 x 4.10	12'11" x 13'6"
Kitchen	3.95 x 2.90	12'11" x 9'6"
Bedroom 1	3.45 x 2.74	11'4" x 9'0"
En-suite	2.25 x 1.50	7'5" x 4'11"
Bedroom 2	3.45 x 2.90	11'4" x 9'6"
Bathroom	2.25 x 2.20	7'5" x 7'3"



St. Modwen Homes, Two Devon Way, Longbridge, Birmingham, B31 2TS
T: 0121 647 1000 E: sales@stmodwenhomes.co.uk

stmodwenhomes.co.uk