

Development Layout



Austin View



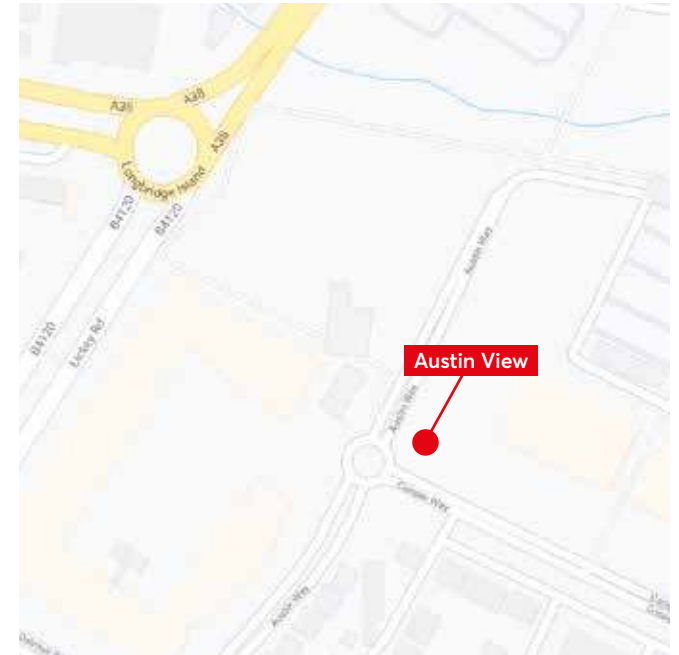
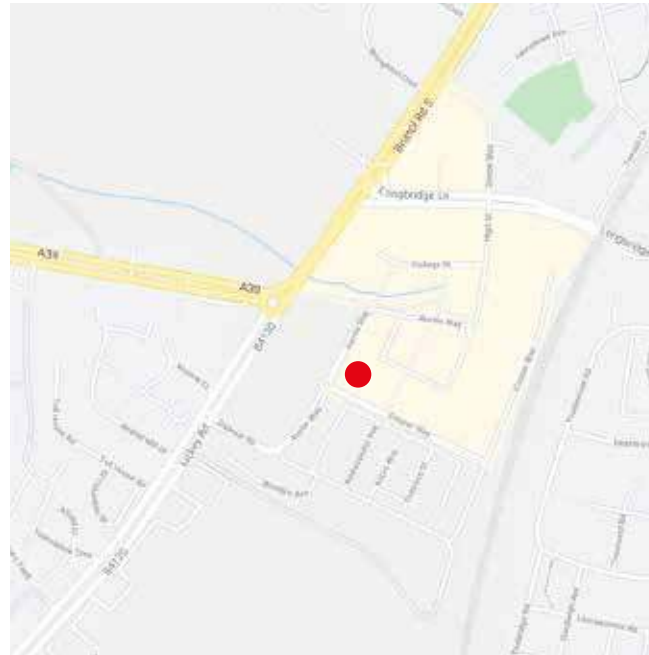
Austin Way, Longbridge

Development Layout



Important Notice

The development layout is intended for illustrative purposes only and may change, for example, in response to market demand or ground conditions. It should be treated as general guidance and cannot be relied upon as accurately describing any one of the specified matters prescribed by any order made under Property Misdescriptions act. Landscaping is indicative. Please refer to the Landscape Plan available from our Sales Consultant or Selling Agent. SMP 66387/October 2021



Austin View, Austin Way, Longbridge, B31 2FZ
Telephone: 0330 058 6250
www.stmodwenhomes.co.uk



St. Modwen Homes, Two Devon Way, Longbridge, Birmingham, B31 2TS
T: 0121 647 1000 E: sales@stmodwenhomes.co.uk

Calls will be charged at seven pence per minute from a BT landline and may cost considerably more from mobile and other phones. Contact your service provider for more details. Map data ©2021 Google.

YOUR COMMUNITY

A vibrant residential community featuring modern houses and a well-equipped playground with children playing. The houses are multi-story with a mix of brick and grey siding. The playground has various equipment including swings, slides, and a merry-go-round. Children are seen playing on the equipment, and a man is interacting with a child on the merry-go-round. The scene is set against a clear blue sky with some greenery in the foreground.

St. Modwen Homes is the housebuilding division of St. Modwen, expert developer and regeneration specialist.

Our core business purpose is: Changing places. Creating better futures. With over 30 years' experience, we know all about transforming the landscape and creating new communities.

We lead the way in delivering quality places to live and work that enhance spaces and create opportunities for growth and shared returns. Working together with our partners, our aim is to deliver a lasting legacy and contribute to better futures for all.

St. Modwen doesn't just build homes, business parks and warehouses, we build schools, universities, retail and leisure facilities. We turn spaces into places that allow generations of people, communities and businesses to thrive.

Being able to draw on the Group's extensive knowledge and expertise in such a wide range of areas means that St. Modwen Homes can build not just superb new homes but create great and lasting new communities too.





YOUR FUTURE

Whether you are looking for your first home or are moving up the property ladder, St. Modwen Homes build an exciting range of properties in a wide range of locations throughout the country.

We offer an extensive selection of house buying initiatives and incentives to help you buy your dream home and our dedicated sales team are here to help you at every step along the way.

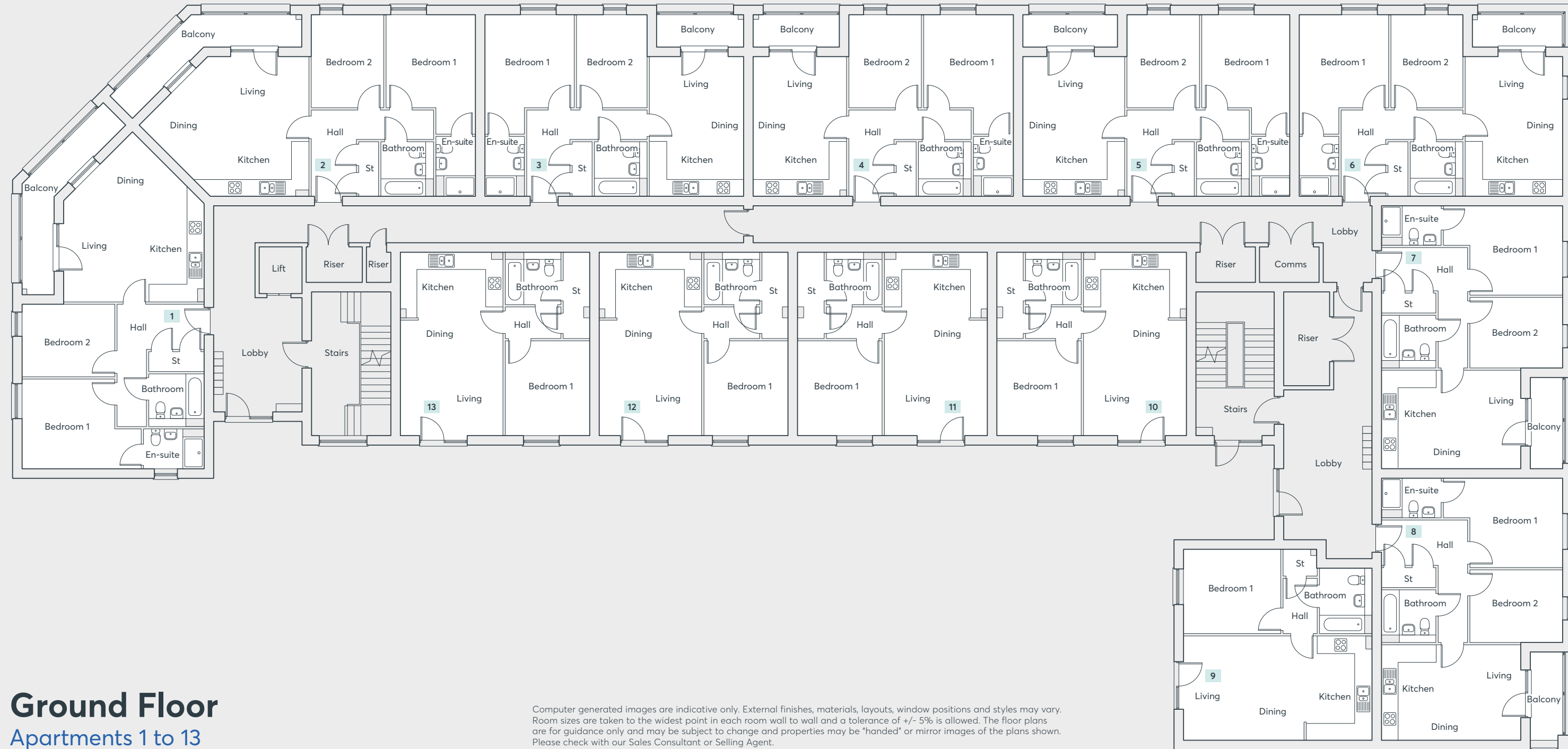
St. Modwen Homes are committed to providing a first class service and our sales consultants are always on hand to answer your questions, whether that's regarding details about your chosen home, obtaining a mortgage or arranging a completion date. Our customer service continues once you've moved into your new home too.

We take our environmental responsibility very seriously and employ environmentally friendly building techniques and sustainable materials wherever we can. Our sites are developed with respect and care for the local community, for our workers and for the existing landscape.

St. Modwen Homes have won many awards, both from the industry and from our customers. These awards mean a lot to us, but building homes people love and being a good neighbour mean even more.







Ground Floor

Apartments 1 to 13

Computer generated images are indicative only. External finishes, materials, layouts, window positions and styles may vary. Room sizes are taken to the widest point in each room wall to wall and a tolerance of +/- 5% is allowed. The floor plans are for guidance only and may be subject to change and properties may be "handed" or mirror images of the plans shown. Please check with our Sales Consultant or Selling Agent.

Apartments 1 & 2 Type 2B.1

Living/Dining/Kitchen	6.48m x 5.36m	21'3" x 17'7"
Bedroom 1	3.55m x 3.40m	11'8" x 11'2"
Bedroom 2	3.55m x 2.77m	11'8" x 9'1"
En-suite	2.30m x 1.50m	7'7" x 4'11"
Bath	2.10m x 2.00m	6'11" x 6'7"

Apartment 3 Type 2B.2

Living/Dining/Kitchen	5.36m x 3.58m	17'7" x 11'9"
Bedroom 1	3.55m x 3.40m	11'8" x 11'2"
Bedroom 2	3.55m x 2.77m	11'8" x 9'1"
En-suite	2.30m x 1.50m	7'7" x 4'11"
Bath	2.10m x 2.00m	6'11" x 6'7"

Apartment 4 Type 2B.3

Living/Dining/Kitchen	5.36m x 3.58m	17'7" x 11'9"
Bedroom 1	3.55m x 3.40m	11'8" x 11'2"
Bedroom 2	3.55m x 2.77m	11'8" x 9'1"
En-suite	2.30m x 1.50m	7'7" x 4'11"
Bath	2.10m x 2.00m	6'11" x 6'7"

Apartment 5 Type 2B.4

Living/Dining/Kitchen	5.36m x 3.87m	17'7" x 12'8"
Bedroom 1	3.55m x 3.40m	11'8" x 11'2"
Bedroom 2	3.55m x 2.71m	11'8" x 8'11"
En-suite	2.30m x 1.50m	7'7" x 4'11"
Bath	2.10m x 2.00m	6'11" x 6'7"

Apartment 6 Type 2B.5

Living/Dining/Kitchen	5.46m x 3.73m	17'11" x 12'3"
Bedroom 1	3.55m x 3.40m	11'8" x 11'2"
Bedroom 2	3.55m x 2.74m	11'8" x 9'0"
En-suite	2.30m x 1.50m	7'7" x 4'11"
Bath	2.10m x 2.00m	6'11" x 6'7"

Apartment 7 Type 2B.6

Living/Dining/Kitchen	5.35m x 3.76m	17'7" x 12'4"
Bedroom 1	3.55m x 3.40m	11'8" x 11'2"
Bedroom 2	3.55m x 2.68m	11'8" x 8'10"
En-suite	2.30m x 1.50m	7'7" x 4'11"
Bath	2.10m x 2.00m	6'11" x 6'7"

Apartment 8 Type 2B.7

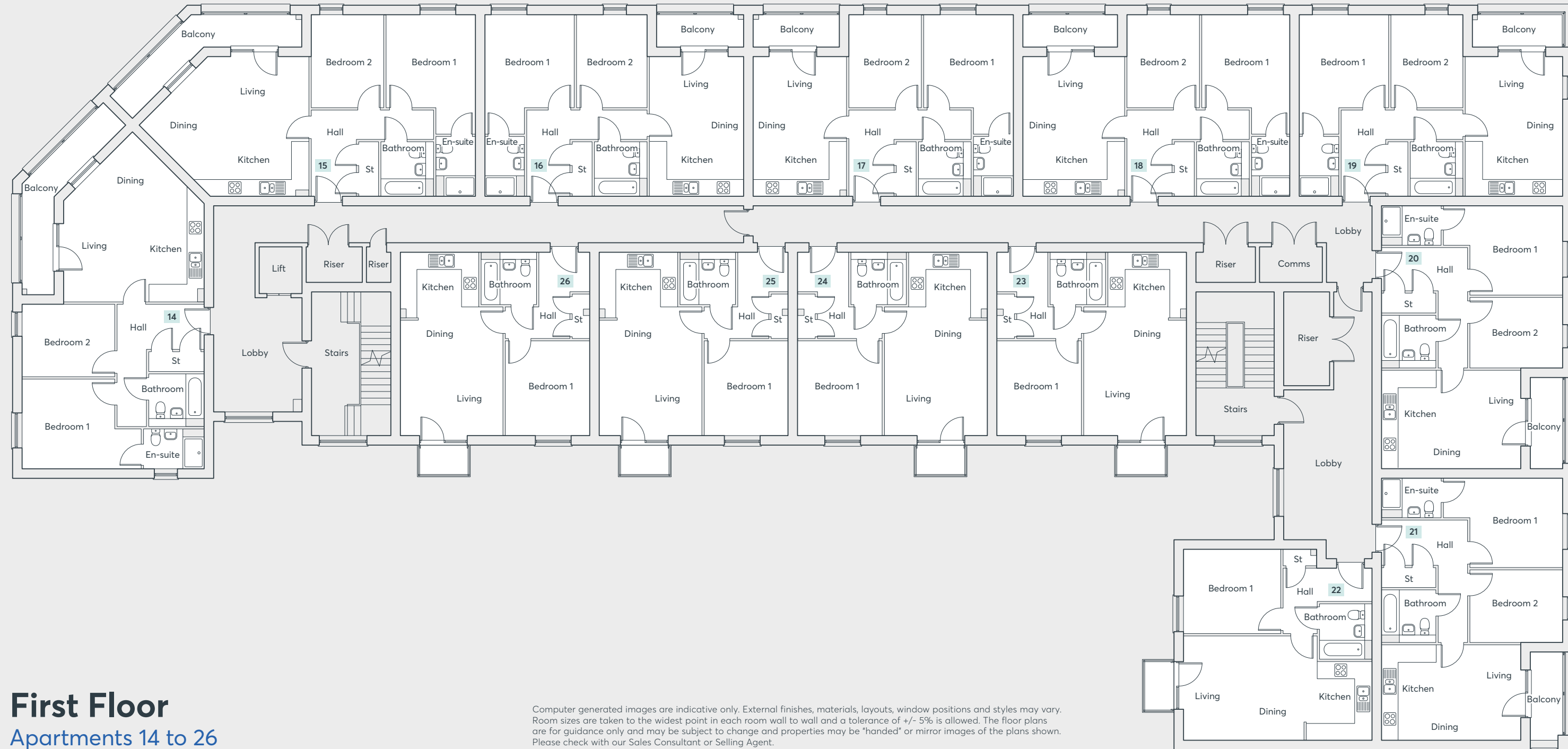
Living/Dining/Kitchen	5.36m x 3.62m	17'7" x 11'0"
Bedroom 1	3.40m x 4.54m	11'2" x 14'11"
Bedroom 2	2.77m x 3.55m	9'1" x 11'8"
En-suite	1.50m x 2.30m	4'11" x 7'7"
Bath	2.00m x 2.10m	6'7" x 6'11"

Apartment 9 Type 1B.2

Living/Dining/Kitchen	3.98m x 7.19m	13'1" x 23'7"
Bedroom 1	3.20m x 3.70m	10'6" x 12'2"
Bath	2.48m x 2.00m	8'1" x 6'7"

Apartments 10, 11, 12 & 13 Type 1B.1

Living/Dining/Kitchen	7.00m x 3.93m	23'0" x 12'11"
Bedroom 1	3.60m x 3.20m	11'10" x 10'6"
Bath	2.00m x 2.10m	6'7" x 6'11"



First Floor

Apartments 14 to 26

Computer generated images are indicative only. External finishes, materials, layouts, window positions and styles may vary. Room sizes are taken to the widest point in each room wall to wall and a tolerance of +/- 5% is allowed. The floor plans are for guidance only and may be subject to change and properties may be "handed" or mirror images of the plans shown. Please check with our Sales Consultant or Selling Agent.

Apartments 14 & 15 Type 2B.1

Living/Dining/Kitchen	6.48m x 5.36m	21'3" x 17'7"
Bedroom 1	3.55m x 3.40m	11'8" x 11'2"
Bedroom 2	3.55m x 2.77m	11'8" x 9'1"
En-suite	2.30m x 1.50m	7'7" x 4'11"
Bath	2.10m x 2.00m	6'11" x 6'7"

Apartment 16 Type 2B.2

Living/Dining/Kitchen	5.36m x 3.58m	17'7" x 11'9"
Bedroom 1	3.55m x 3.40m	11'8" x 11'2"
Bedroom 2	3.55m x 2.77m	11'8" x 9'1"
En-suite	2.30m x 1.50m	7'7" x 4'11"
Bath	2.10m x 2.00m	6'11" x 6'7"

Apartment 17 Type 2B.3

Living/Dining/Kitchen	5.36m x 3.58m	17'7" x 11'9"
Bedroom 1	3.55m x 3.40m	11'8" x 11'2"
Bedroom 2	3.55m x 2.77m	11'8" x 9'1"
En-suite	2.30m x 1.50m	7'7" x 4'11"
Bath	2.10m x 2.00m	6'11" x 6'7"

Apartment 18 Type 2B.4

Living/Dining/Kitchen	5.36m x 3.87m	17'7" x 12'8"
Bedroom 1	3.55m x 3.40m	11'8" x 11'2"
Bedroom 2	3.55m x 2.71m	11'8" x 8'11"
En-suite	2.30m x 1.50m	7'7" x 4'11"
Bath	2.10m x 2.00m	6'11" x 6'7"

Apartment 19 Type 2B.5

Living/Dining/Kitchen	5.46m x 3.73m	17'11" x 12'3"
Bedroom 1	3.55m x 3.40m	11'8" x 11'2"
Bedroom 2	3.55m x 2.74m	11'8" x 9'0"
En-suite	2.30m x 1.50m	7'7" x 4'11"
Bath	2.10m x 2.00m	6'11" x 6'7"

Apartment 20 Type 2B.6

Living/Dining/Kitchen	5.35m x 3.76m	17'7" x 12'4"
Bedroom 1	3.55m x 3.40m	11'8" x 11'2"
Bedroom 2	3.55m x 2.68m	11'8" x 8'10"
En-suite	2.30m x 1.50m	7'7" x 4'11"
Bath	2.10m x 2.00m	6'11" x 6'7"

Apartment 8 Type 2B.7

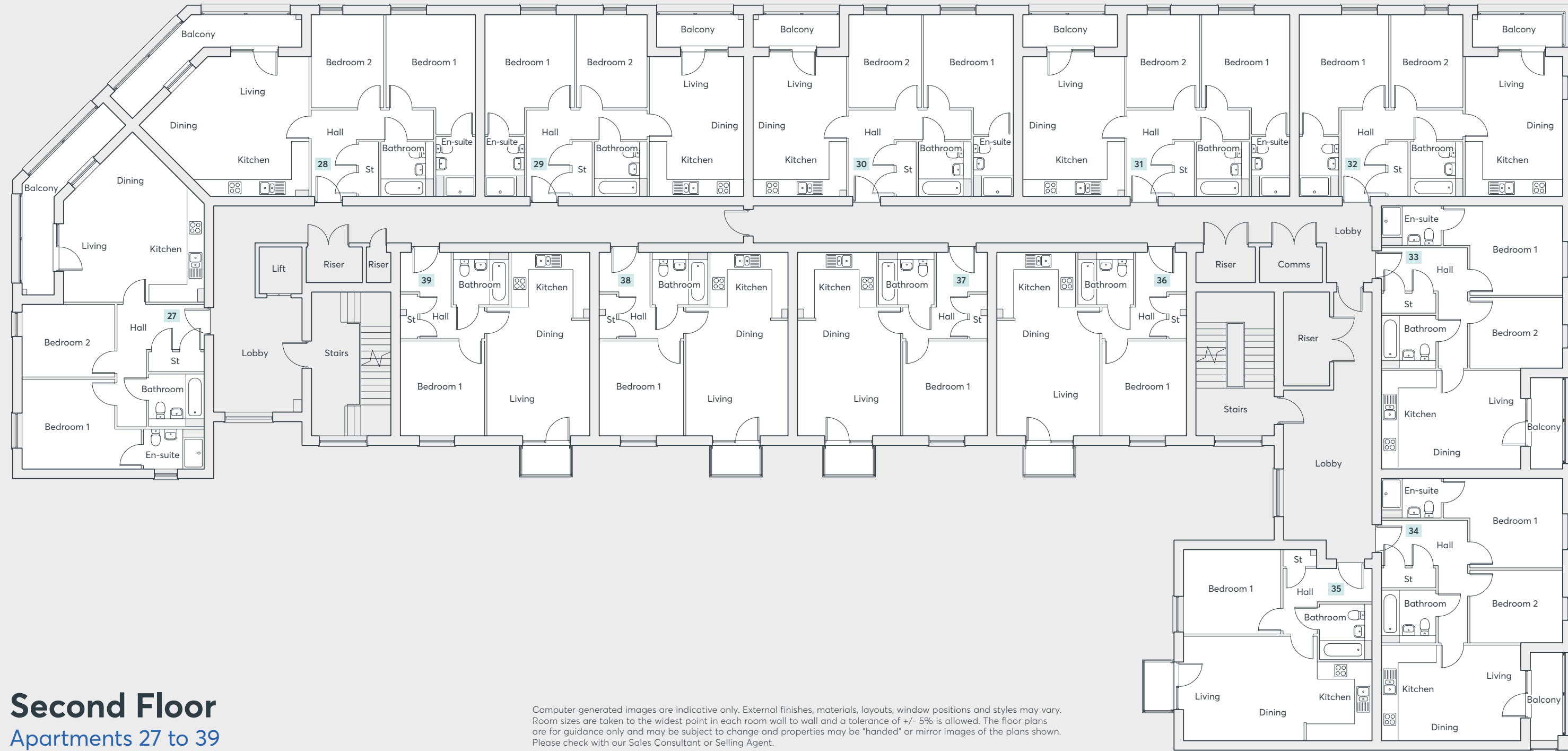
Living/Dining/Kitchen	5.36m x 3.62m	17'7" x 11'0"
Bedroom 1	3.40m x 4.54m	11'2" x 14'11"
Bedroom 2	2.77m x 3.55m	9'1" x 11'8"
En-suite	1.50m x 2.30m	4'11" x 7'7"
Bath	2.00m x 2.10m	6'7" x 6'11"

Apartment 22 Type 1B.4

Living/Dining/Kitchen	3.98m x 7.19m	13'1" x 23'7"
Bedroom 1	3.20m x 3.70m	10'6" x 12'2"
Bath	2.10m x 2.00m	6'11" x 6'7"

Apartment 23, 24, 25 & 26 Type 1B.3

Living/Dining/Kitchen	7.00m x 3.93m	23'0" x 12'11"
Bedroom 1	3.60m x 3.20m	11'10" x 10'6"
Bath	2.00m x 2.10m	6'7" x 6'11"



Second Floor Apartments 27 to 39

Computer generated images are indicative only. External finishes, materials, layouts, window positions and styles may vary. Room sizes are taken to the widest point in each room wall to wall and a tolerance of +/- 5% is allowed. The floor plans are for guidance only and may be subject to change and properties may be "handed" or mirror images of the plans shown. Please check with our Sales Consultant or Selling Agent.

Apartments 27 & 28 Type 2B.1

Living/Dining/Kitchen	6.48m x 5.36m	21'3" x 17'7"
Bedroom 1	3.55m x 3.40m	11'8" x 11'2"
Bedroom 2	3.55m x 2.77m	11'8" x 9'1"
En-suite	2.30m x 1.50m	7'7" x 4'11"
Bath	2.10m x 2.00m	6'11" x 6'7"

Apartment 29 Type 2B.2

Living/Dining/Kitchen	5.36m x 3.58m	17'7" x 11'9"
Bedroom 1	3.55m x 3.40m	11'8" x 11'2"
Bedroom 2	3.55m x 2.77m	11'8" x 9'1"
En-suite	2.30m x 1.50m	7'7" x 4'11"
Bath	2.10m x 2.00m	6'11" x 6'7"

Apartment 30 Type 2B.3

Living/Dining/Kitchen	5.36m x 3.58m	17'7" x 11'9"
Bedroom 1	3.55m x 3.40m	11'8" x 11'2"
Bedroom 2	3.55m x 2.77m	11'8" x 9'1"
En-suite	2.30m x 1.50m	7'7" x 4'11"
Bath	2.10m x 2.00m	6'11" x 6'7"

Apartment 31 Type 2B.4

Living/Dining/Kitchen	5.36m x 3.87m	17'7" x 12'8"
Bedroom 1	3.55m x 3.40m	11'8" x 11'2"
Bedroom 2	3.55m x 2.71m	11'8" x 8'11"
En-suite	2.30m x 1.50m	7'7" x 4'11"
Bath	2.10m x 2.00m	6'11" x 6'7"

Apartment 32 Type 2B.5

Living/Dining/Kitchen	5.46m x 3.73m	17'11" x 12'3"
Bedroom 1	3.55m x 3.40m	11'8" x 11'2"
Bedroom 2	3.55m x 2.74m	11'8" x 9'0"
En-suite	2.30m x 1.50m	7'7" x 4'11"
Bath	2.10m x 2.00m	6'11" x 6'7"

Apartment 33 Type 2B.6

Living/Dining/Kitchen	5.35m x 3.76m	17'7" x 12'4"
Bedroom 1	3.55m x 3.40m	11'8" x 11'2"
Bedroom 2	3.55m x 2.68m	11'8" x 8'10"
En-suite	2.30m x 1.50m	7'7" x 4'11"
Bath	2.10m x 2.00m	6'11" x 6'7"

Apartment 8 Type 2B.7

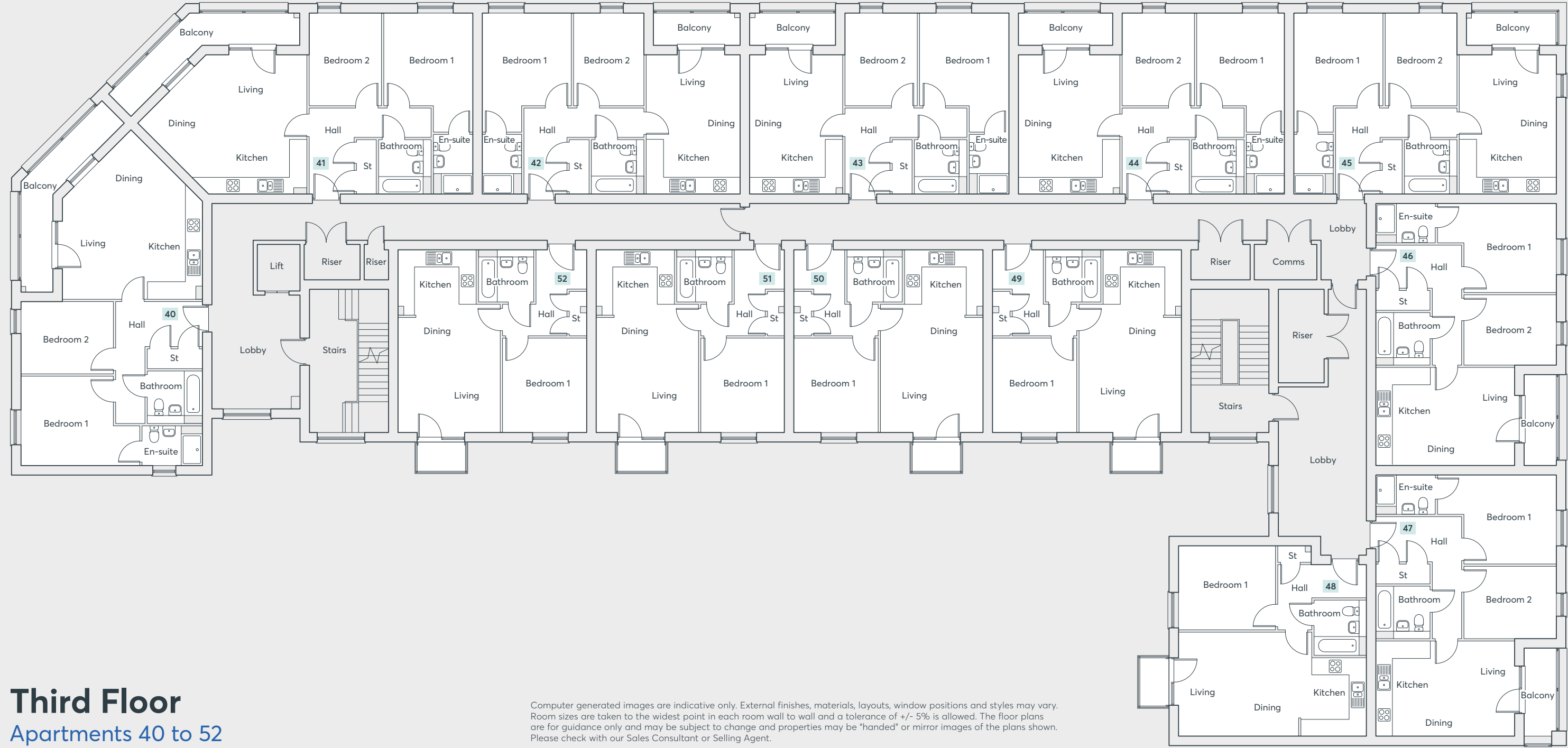
Living/Dining/Kitchen	5.36m x 3.62m	17'7" x 11'0"
Bedroom 1	3.40m x 4.54m	11'2" x 14'11"
Bedroom 2	2.77m x 3.55m	9'1" x 11'8"
En-suite	1.50m x 2.30m	4'11" x 7'7"
Bath	2.00m x 2.10m	6'7" x 6'11"

Apartment 22 Type 1B.4

Living/Dining/Kitchen	3.98m x 7.19m	13'1" x 23'7"
Bedroom 1	3.20m x 3.70m	10'6" x 12'2"
Bath	2.10m x 2.00m	6'11" x 6'7"

Apartment 23, 24, 25 & 26 Type 1B.3

Living/Dining/Kitchen	7.00m x 3.93m	23'0" x 12'11"
Bedroom 1	3.60m x 3.20m	11'10" x 10'6"
Bath	2.00m x 2.10m	6'7" x 6'11"



Third Floor

Apartments 40 to 52

Computer generated images are indicative only. External finishes, materials, layouts, window positions and styles may vary. Room sizes are taken to the widest point in each room wall to wall and a tolerance of +/- 5% is allowed. The floor plans are for guidance only and may be subject to change and properties may be "handed" or mirror images of the plans shown. Please check with our Sales Consultant or Selling Agent.

Apartments 40 & 41 Type 2B.1

Living/Dining/Kitchen	6.48m x 5.36m	21'3" x 17'7"
Bedroom 1	3.55m x 3.40m	11'8" x 11'2"
Bedroom 2	3.55m x 2.77m	11'8" x 9'1"
En-suite	2.30m x 1.50m	7'7" x 4'11"
Bath	2.10m x 2.00m	6'11" x 6'7"

Apartment 42 Type 2B.2

Living/Dining/Kitchen	5.36m x 3.58m	17'7" x 11'9"
Bedroom 1	3.55m x 3.40m	11'8" x 11'2"
Bedroom 2	3.55m x 2.77m	11'8" x 9'1"
En-suite	2.30m x 1.50m	7'7" x 4'11"
Bath	2.10m x 2.00m	6'11" x 6'7"

Apartment 43 Type 2B.3

Living/Dining/Kitchen	5.36m x 3.58m	17'7" x 11'9"
Bedroom 1	3.55m x 3.40m	11'8" x 11'2"
Bedroom 2	3.55m x 2.77m	11'8" x 9'1"
En-suite	2.30m x 1.50m	7'7" x 4'11"
Bath	2.10m x 2.00m	6'11" x 6'7"

Apartment 44 Type 2B.4

Living/Dining/Kitchen	5.36m x 3.87m	17'7" x 12'8"
Bedroom 1	3.55m x 3.40m	11'8" x 11'2"
Bedroom 2	3.55m x 2.71m	11'8" x 8'11"
En-suite	2.30m x 1.50m	7'7" x 4'11"
Bath	2.10m x 2.00m	6'11" x 6'7"

Apartment 45 Type 2B.5

Living/Dining/Kitchen	5.46m x 3.73m	17'11" x 12'3"
Bedroom 1	3.55m x 3.40m	11'8" x 11'2"
Bedroom 2	3.55m x 2.74m	11'8" x 9'0"
En-suite	2.30m x 1.50m	7'7" x 4'11"
Bath	2.10m x 2.00m	6'11" x 6'7"

Apartment 46 Type 2B.6

Living/Dining/Kitchen	5.35m x 3.76m	17'7" x 12'4"
Bedroom 1	3.55m x 3.40m	11'8" x 11'2"
Bedroom 2	3.55m x 2.68m	11'8" x 8'10"
En-suite	2.30m x 1.50m	7'7" x 4'11"
Bath	2.10m x 2.00m	6'11" x 6'7"

Apartment 8 Type 2B.7

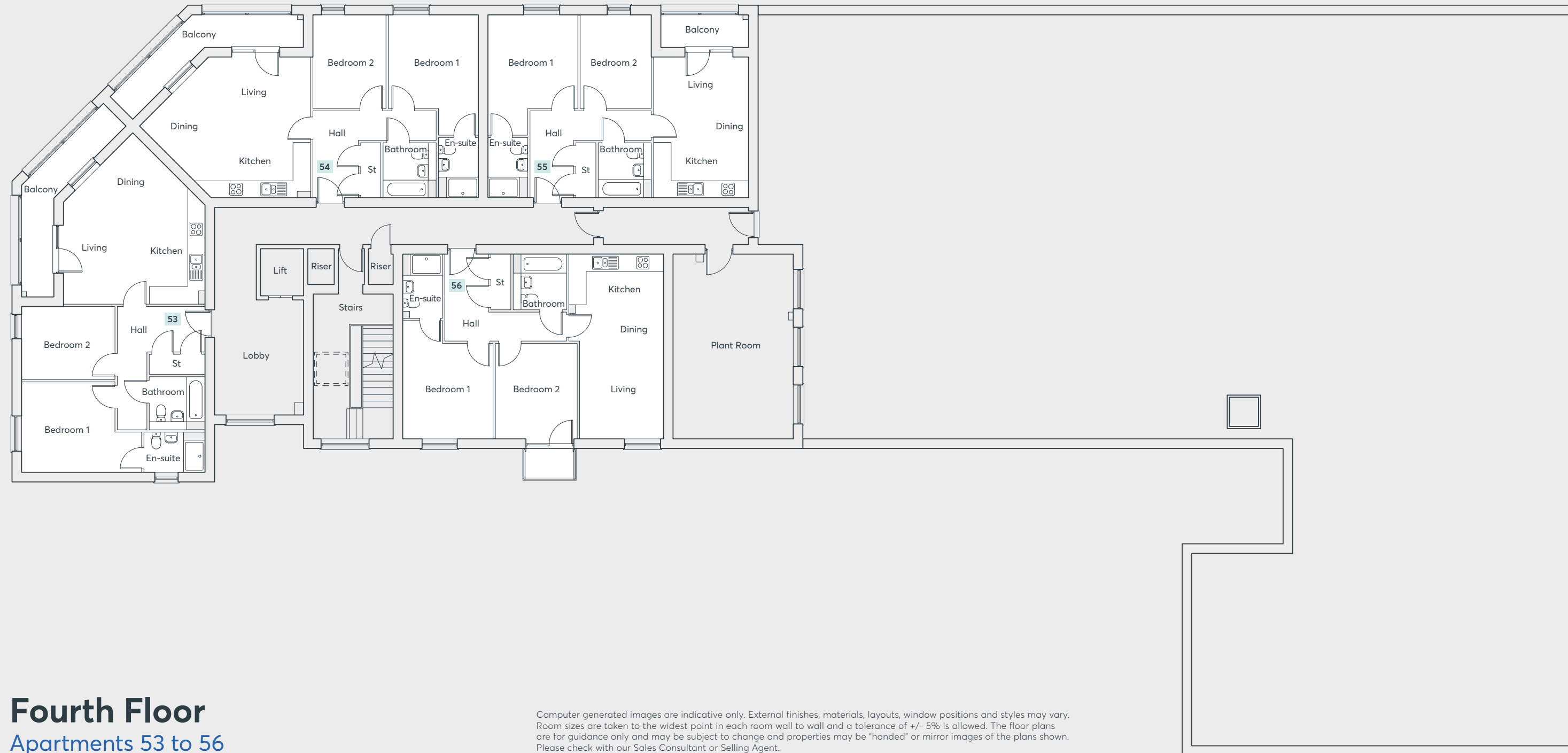
Living/Dining/Kitchen	5.36m x 3.62m	17'7" x 11'0"
Bedroom 1	3.40m x 4.54m	11'2" x 14'11"
Bedroom 2	2.77m x 3.55m	9'1" x 11'8"
En-suite	1.50m x 2.30m	4'11" x 7'7"
Bath	2.00m x 2.10m	6'7" x 6'11"

Apartment 22 Type 1B.4

Living/Dining/Kitchen	3.98m x 7.19m	13'1" x 23'7"
Bedroom 1	3.20m x 3.70m	10'6" x 12'2"
Bath	2.10m x 2.00m	6'11" x 6'7"

Apartment 23, 24, 25 & 26 Type 1B.3

Living/Dining/Kitchen	7.00m x 3.93m	23'0" x 12'11"
Bedroom 1	3.60m x 3.20m	11'10" x 10'6"
Bath	2.00m x 2.10m	6'7" x 6'11"



Apartments 53 & 54 Type 2B.1

Living/Dining/Kitchen	6.48m x 5.36m	21'3" x 17'7"
Bedroom 1	3.55m x 3.40m	11'8" x 11'2"
Bedroom 2	3.55m x 2.77m	11'8" x 9'1"
En-suite	2.30m x 1.50m	7'7" x 4'11"
Bath	2.10m x 2.00m	6'11" x 6'7"

Apartment 55 Type 2B.2

Living/Dining/Kitchen	5.36m x 3.58m	17'7" x 11'9"
Bedroom 1	3.55m x 3.40m	11'8" x 11'2"
Bedroom 2	3.55m x 2.77m	11'8" x 9'1"
En-suite	2.30m x 1.50m	7'7" x 4'11"
Bath	2.10m x 2.00m	6'11" x 6'7"

Apartment 56 Type 2B.8

Living/Dining/Kitchen	7.00m x 3.16m	23'0" x 10'4"
Bedroom 1	4.49m x 3.40m	14'9" x 11'2"
Bedroom 2	3.17m x 3.10m	10'5" x 10'2"
En-suite	2.42m x 1.50m	7'11" x 4'11"
Bath	2.10m x 2.00m	6'11" x 6'7"

Fourth Floor
Apartments 53 to 56

Computer generated images are indicative only. External finishes, materials, layouts, window positions and styles may vary. Room sizes are taken to the widest point in each room wall to wall and a tolerance of +/- 5% is allowed. The floor plans are for guidance only and may be subject to change and properties may be "handed" or mirror images of the plans shown. Please check with our Sales Consultant or Selling Agent.



**CONSUMER
CODE FOR
HOME BUILDERS**
www.consumercode.co.uk



St. Modwen Homes, Two Devon Way, Longbridge, Birmingham, B31 2TS
T: 0121 647 1000 E: sales@stmodwenhomes.co.uk

stmodwenhomes.co.uk