



Bramshall Meadows

Bramshall, Uttoxeter

Development Layout - Phase 2E

- The Aldo (1214)**
3 bedroom home
- The Bromley (1044)**
3 bedroom home
- The Edwena (1036)**
3 bedroom home
- The Chad (979)**
3 bedroom home
- The Kea (936)**
3 bedroom home
- The Webster (936)**
3 bedroom home
- The Houghton (920)**
3 bedroom home
- The Mirin (838)**
3 bedroom home
- The Lawrence (790)**
3 bedroom home
- The Loxley (759)**
2 bedroom home
- The Kemble (705)**
2 bedroom home
- The Sabina (599)/
The Selwyn (471)**
1 bedroom home
- The Ferrer (513)**
1 bedroom apartment

BCP = Bin collection point

*Discount to market



Important Notice

The development layout is intended for illustrative purposes only and may change, for example, in response to market demand or ground conditions. It should be treated as general guidance and cannot be relied upon as accurately describing any one of the specified matters prescribed by any order made under Property Misdescriptions act. Landscaping is indicative. Please refer to the Landscape Plan available from our Sales Consultant or Selling Agent. SMP 60883 NOVEMBER 2021

The Sabina

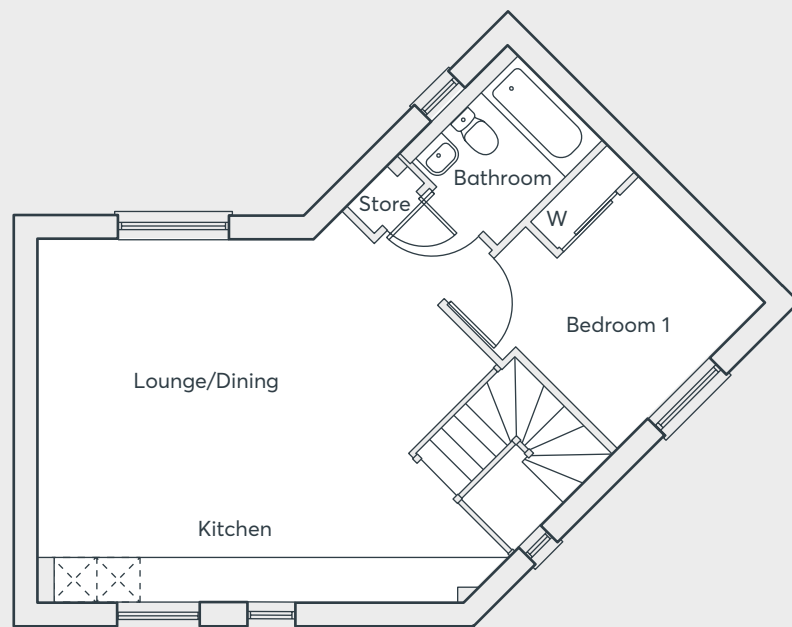
- Open plan living room
- Fitted kitchen/dining with built-in oven, hob and extractor hood
- Double bedroom with built-in wardrobe
- Store cupboard
- Fully fitted bathroom with shower over bath
- Double glazing and high performance insulation throughout
- 10 year New Home warranty

Bramshall Meadows
Uttoxeter

1
Bedroom
Maisonette

 **ST.MODWEN
HOMES**

The Sabina



First Floor

Living Room/ Dining Room/ Kitchen	3.74m x 5.13m	12'9" x 16'7"
Bedroom 1	3.35m x 2.70m	11'0" x 8'10"
Bathroom	2.12m x 1.69m	7'0" x 5'7"

*Please speak to the sales consultant to confirm on flexible floor plan option, available on certain plots only and dependent of built stage.

Bramshall Meadows
Uttoxeter

1
Bedroom
Maisonette

 **ST.MODWEN
HOMES**

The Selwyn

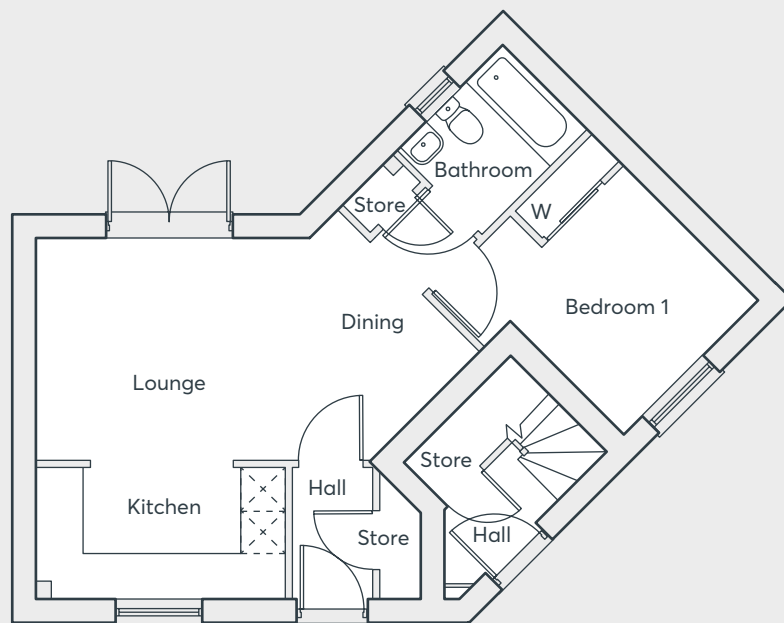
- Open plan living/dining room
- Fitted kitchen with built-in oven, hob and extractor hood
- Double bedroom with built-in wardrobe
- Store cupboard
- Fully fitted bathroom with shower over bath
- Full gas fired central heating
- Double glazing and high performance insulation throughout
- 10 year New Home warranty

Bramshall Meadows
Uttoxeter

1
Bedroom
Maisonette



The Selwyn



Ground Floor

Living Room/ Dining Room/ Kitchen	3.74m x 5.13m	12'9" x 16'10"
Bedroom 1	3.35m x 2.70m	10'4" x 9'8"
Bathroom	2.12m x 1.69m	7'0" x 6'3"

*Please speak to the sales consultant to confirm on flexible floor plan option, available on certain plots only and dependent of built stage.

Bramshall Meadows
Uttoxeter

1
Bedroom
Maisonette

 **ST.MODWEN
HOMES**

The Houghton

- Open-plan living
- Dedicated laundry room
- French doors in the kitchen-dining room leading to the rear garden
- Built-in wardrobe and en-suite in the master bedroom
- Full gas fired central heating
- Double glazing and high-performance insulation throughout
- 10 year New Home warranty

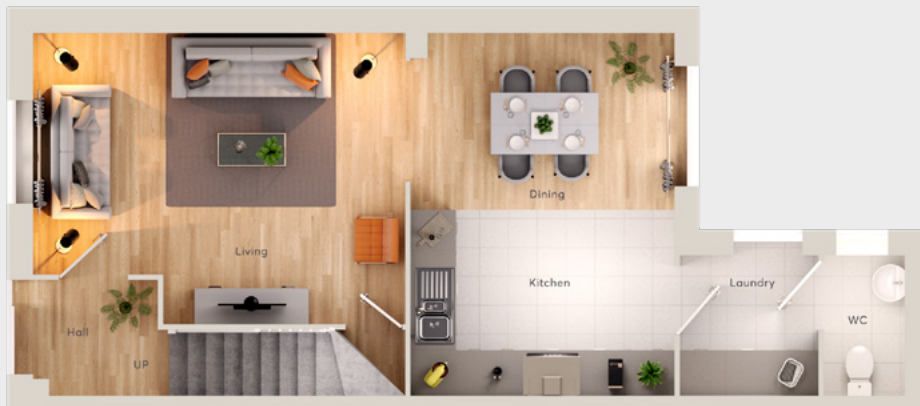
Bramshall Meadows
Uttoxeter

3
Bedroom
Home



The Houghton

Ground Floor



First Floor



Kitchen/Dining	4.76m x 3.44m	15'7" x 11'3"
Living Room	4.87m x 3.81m	16'0" x 12'6"
Laundry	1.83m x 1.81m	6'0" x 5'11"
Cloakroom	1.04m x 1.83m	3'5" x 6'0"
Bedroom 1	2.87m x 2.50m	9'5" x 8'2"
Bedroom 2	3.13m x 2.87m	10'3" x 9'5"
Bedroom 3	3.44m x 1.81m	11'3" x 5'11"
Bathroom	1.87m x 1.70m	6'2" x 5'7"
En-suite	1.80m x 1.92m	5'11" x 6'4"

*Please speak to the sales consultant to confirm on flexible floor plan option, available on certain plots only and dependent of built stage.

Bramshall Meadows
Uttoxeter

**3
Bedroom
Home**

 **ST.MODWEN
HOMES**

The Aldo

- Open plan kitchen/dining room with French doors to the garden
- Laundry room off the kitchen/dining room
- Separate living room
- Downstairs cloakroom
- Master bedroom with en-suite and built-in wardrobe
- Fully fitted family bathroom
- Double glazing and high-performance insulation throughout
- 10 year New Home warranty

3
Bedroom
Home

Bramshall Meadows
Uttoxeter



The Aldo

Ground Floor



First Floor



Kitchen/Dining	4.57m x 3.10m	15'0" x 10'0"
Living	3.23m x 6.04m	10'7" x 19'10"
Study	2.26m x 3.02m	7'5" x 9'11"
Bedroom 1	3.29m x 4.25m	10'9" x 13'11"
En-suite	2.20m x 1.70m	7'3" x 5'7"
Bedroom 2	3.30m x 3.92m	10'10" x 12'10"
Bedroom 3?	3.7m x 2.7m	12'2" x 7'5"
Bathroom	2.25m x 1.70m	7'5" x 5'7"

*Please speak to the sales consultant to confirm on flexible floor plan option, available on certain plots only and dependent of built stage.

Bramshall Meadows
Uttoxeter

**3
Bedroom
Home**

 **ST.MODWEN
HOMES**

Development Layout - Phase 2B

The Almond (1857)
5 bedroom home

The Mayne (1774)
4 bedroom home

The Garnet (1474)
4 bedroom home

The Barlow (1379)
4 bedroom home

The Chichester (1208)
4 bedroom home

The Becket (1210)
4 bedroom home

The Bromley (1044)
3 bedroom home

The Edwena (1036)
3 bedroom home

The Hallvard (979)
3 bedroom home

The Kea (936)
3 bedroom home

The Webster (936)
3 bedroom home

The Houghton (920)
3 bedroom home

The Mirin (838)
3 bedroom home

The Lawrence (790)
3 bedroom home

The Loxley (759)
2 bedroom home

The Ferrer (513)
1 bedroom apartment

Affordable housing

BCP = Bin collection point
LEAP = Local Equipped area of play
B&BS = Bin & Bike Store

*Discount to market



Important Notice

The development layout is intended for illustrative purposes only and may change, for example, in response to market demand or ground conditions. It should be treated as general guidance and cannot be relied upon as accurately describing any one of the specified matters prescribed by any order made under Property Misdescriptions act. Landscaping is indicative. Please refer to the Landscape Plan available from our Sales Consultant or Selling Agent.

The Mirin

- Separate living room
- Kitchen/Dining with French doors to the garden
- Downstairs cloakroom
- Master bedroom with en-suite and built-in wardrobe
- Fully fitted family bathroom
- Full gas fired central heating
- Double glazing and high-performance insulation throughout
- 10 year New Home warranty

Bramshall Meadows
Uttoxeter

3
Bedroom
Home

 **ST.MODWEN
HOMES**

The Mirin

Ground Floor



First Floor



Living Room	4.40m x 5.60m	14'5" x 18'4"
Kitchen/Dining	4.40m x 3.16m	14'5" x 10'5"
Cloakroom	0.86m x 1.56m	2'10" x 5'5"
Bedroom 1	2.90m x 3.16m	9'6" x 10'5"
En-suite	1.41m x 3.16m	4'7" x 10'5"
Bedroom 2	2.26m x 3.71m	7'5" x 12'2"
Bedroom 3	2.05m x 2.71m	6'9" x 8'11"
Bathroom	1.88m x 1.82m	6'1" x 5'11"

*Please speak to the sales consultant to confirm on flexible floor plan option, available on certain plots only and dependent of built stage.

Bramshall Meadows
Uttoxeter

**3
Bedroom
Home**

 **ST.MODWEN
HOMES**