

# Locking Parklands

Cranwell Road, Locking,  
Weston Super Mare BS24 7DP



## MULBERRY COURT



1 & 2 bedroom apartments

# Ground Floor

## Apartments 74 to 76

### Apartment 74

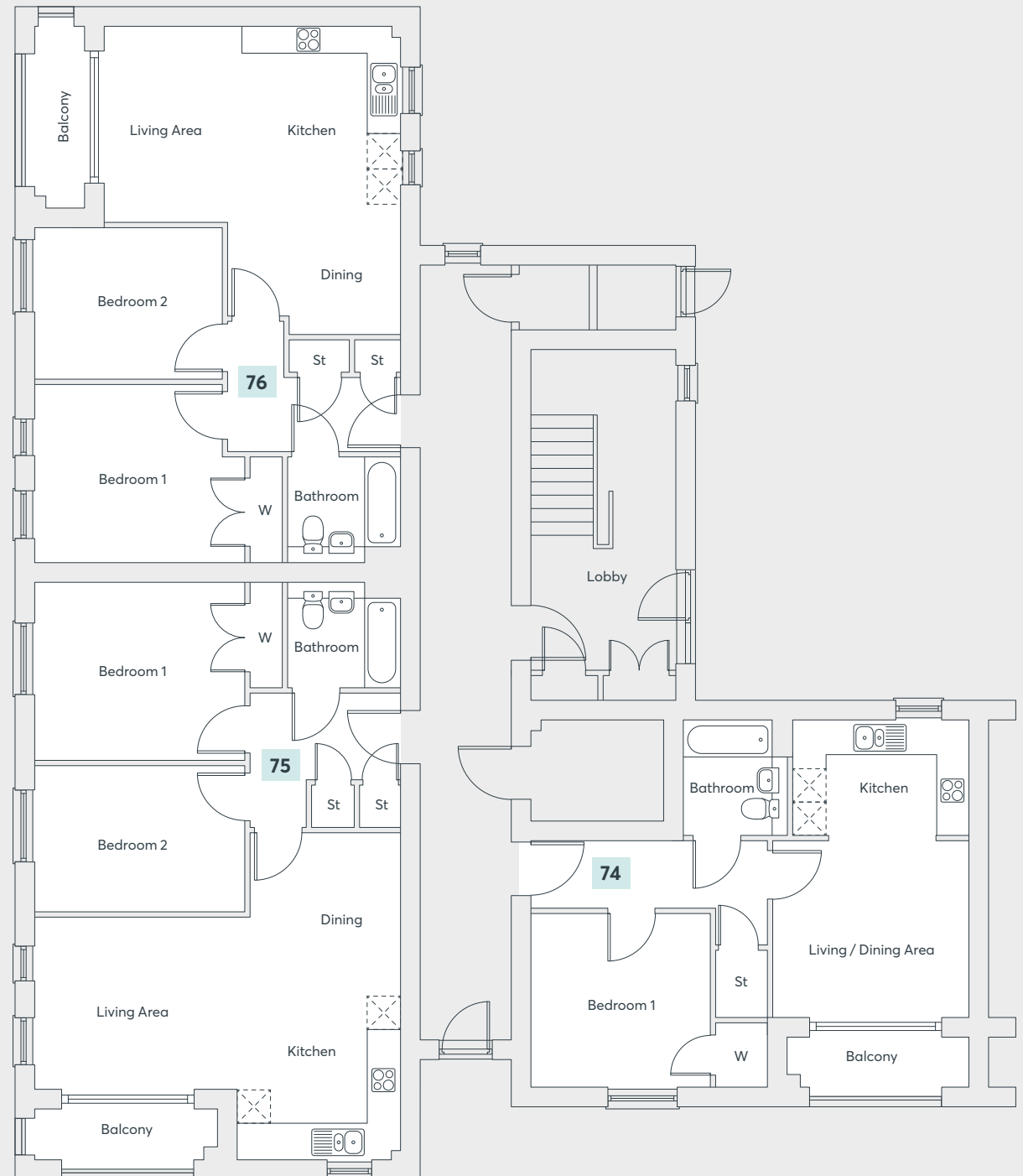
Living/Dining	3.74m x 3.34m	12'3" x 10'11"
Kitchen	3.33m x 2.16m	10'11" x 7'1"
Bedroom 1	3.41m x 3.28m	11'2" x 10'9"
Bathroom	2.01m x 2.16m	6'7" x 7'1"

### Apartment 75

Lounge	4.07m x 3.22m	13'4" x 10'7"
Kitchen	3.11m x 3.08m	10'2" x 10'11"
Dining	2.87m x 3.08m	9'5" x 10'1"
Bedroom 1	3.98m x 3.37m	13'1" x 11'1"
Bedroom 2	3.98m x 2.76m	13'1" x 9'1"
Bathroom	2.16m x 2.01m	7'1" x 6'7"

### Apartment 76

Lounge	2.58m x 3.74m	8'6" x 12'3"
Kitchen	3.01m x 3.32m	9'11" x 10'11"
Dining	3.29m x 2.50m	10'10" x 8'2"
Bedroom 1	3.98m x 3.37m	13'1" x 11'1"
Bedroom 2	3.56m x 2.83m	11'8" x 9'3"
Bathroom	2.16m x 2.01m	7'1" x 6'7"



Computer generated images are indicative only. External finishes, materials, layouts, window positions and styles may vary. Room sizes are taken to the widest point in each room wall to wall and a tolerance of +/- 5% is allowed. The floor plans are for guidance only and may be subject to change and properties may be "handed" or mirror images of the plans shown. Please check with our Sales Consultant or Selling Agent.  
SMP 64823/May 2021

# First Floor

## Apartments 77 to 79

### Apartment 77

Lounge	2.38m x 3.74m	7'10" x 12'3"
Kitchen/Dining	3.19m x 6.04m	10'6" x 19'10"
Bedroom 1	3.67m x 3.66m	12'1" x 12'0"
Bedroom 2	3.31m x 3.28m	10'10" x 10'9"
Bathroom	2.06m x 2.16m	6'9" x 7'1"

### Apartment 78

Lounge	4.07m x 3.22m	13'4" x 10'7"
Kitchen	3.11m x 3.08m	10'2" x 10'1"
Dining	2.87m x 3.08m	9'5" x 10'1"
Bedroom 1	3.98m x 3.37m	13'1" x 11'1"
Bedroom 2	3.98m x 2.76m	13'1" x 9'1"
Bathroom	2.16m x 2.01m	7'1" x 6'7"

### Apartment 79

Lounge	2.58m x 3.74m	8'6" x 12'3"
Kitchen	3.01m x 3.32m	9'11" x 10'11"
Dining	3.29m x 2.50m	10'10" x 8'2"
Bedroom 1	3.98m x 3.37m	13'1" x 11'1"
Bedroom 2	3.56m x 2.83m	11'8" x 9'3"
Bathroom	2.16m x 2.01m	7'1" x 6'7"



Computer generated images are indicative only. External finishes, materials, layouts, window positions and styles may vary. Room sizes are taken to the widest point in each room wall to wall and a tolerance of +/- 5% is allowed. The floor plans are for guidance only and may be subject to change and properties may be "handed" or mirror images of the plans shown. Please check with our Sales Consultant or Selling Agent.  
SMP 64823/May 2021

# Second Floor

## Apartments 80 to 82

### Apartment 80

Lounge	2.38m x 3.74m	7'10" x 12'3"
Kitchen/Dining	3.19m x 6.04m	10'6" x 19'10"
Bedroom 1	3.67m x 3.66m	12'1" x 12'0"
Bedroom 2	3.31m x 3.28m	10'10" x 10'9"
Bathroom	2.06m x 2.16m	6'9" x 7'1"

### Apartment 81

Lounge	4.07m x 3.22m	13'4" x 10'7"
Kitchen	3.11m x 3.08m	10'2" x 10'1"
Dining	2.87m x 3.08m	9'5" x 10'1"
Bedroom 1	3.98m x 3.37m	13'1" x 11'1"
Bedroom 2	3.98m x 2.76m	13'1" x 9'1"
Bathroom	2.16m x 2.01m	7'1" x 6'7"

### Apartment 82

Lounge	2.58m x 3.74m	8'6" x 12'3"
Kitchen	3.01m x 3.32m	9'11" x 10'11"
Dining	3.29m x 2.50m	10'10" x 8'2"
Bedroom 1	3.98m x 3.37m	13'1" x 11'1"
Bedroom 2	3.56m x 2.83m	11'8" x 9'3"
Bathroom	2.16m x 2.01m	7'1" x 6'7"



Computer generated images are indicative only. External finishes, materials, layouts, window positions and styles may vary. Room sizes are taken to the widest point in each room wall to wall and a tolerance of +/- 5% is allowed. The floor plans are for guidance only and may be subject to change and properties may be "handed" or mirror images of the plans shown. Please check with our Sales Consultant or Selling Agent.  
SMP 64823/May 2021